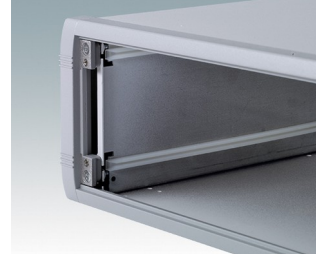
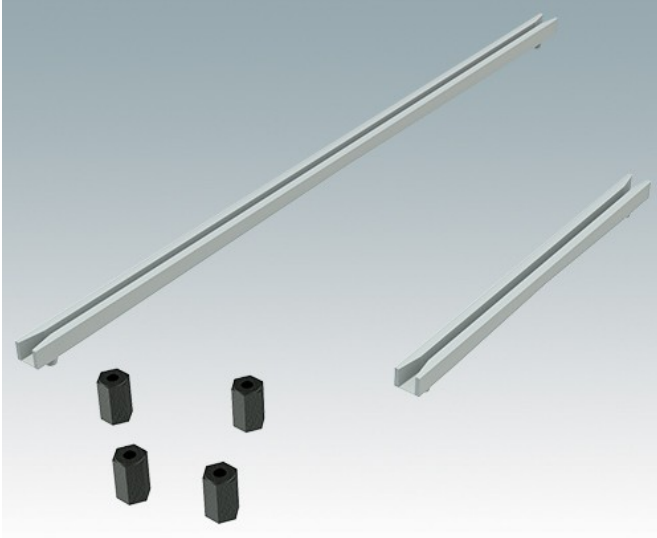
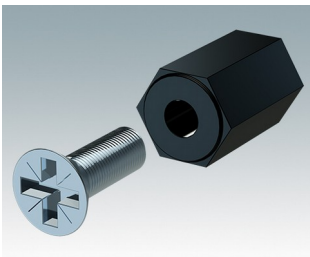


## Universal accessories for mounting PCBs in any enclosures

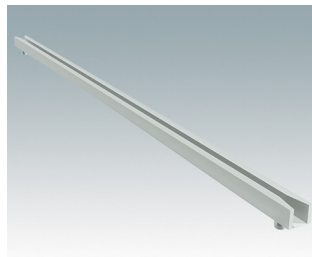
- M3 plastic PCB mounting pillars, 10 mm high
- Snap-in PCB guides for 1.6 mm thick PCBs.



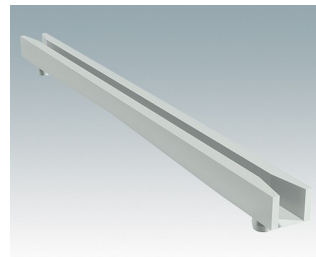
### Select Versions



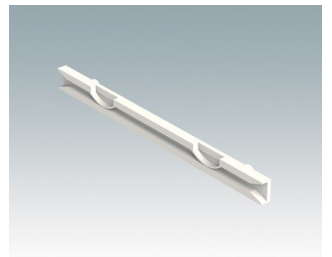
**M5600001**  
PCB mounting kit  
PA 6  
Black RAL 9005



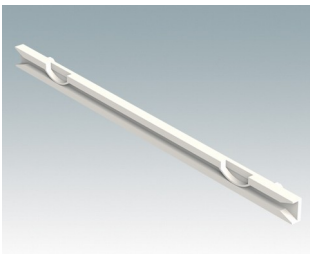
**M5700202**  
PCB guide, 216mm  
PA 6/6 (UL 94 V-2)  
White



**M5700203**  
PCB guide, 102mm  
PA 6/6 (UL 94 V-2)  
White

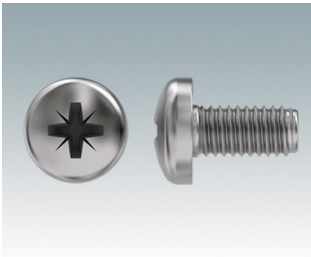


**M6490010**  
PCB Guide, 102 mm  
PA 6/6 (UL 94 V-0)  
Natural finish  
101.6x7.5x3.5mm



**M6490020**  
PCB Guide, 140 mm  
PA 6/6 (UL 94 V-0)  
Natural finish  
139.7x7.5x3.5mm

## Accessory



**M5600010**  
PCB/Panel Fixing Screws, M3  
Steel  
Zinc coated  
6mm

Subject to technical modification without notice. © OKW Enclosures Ltd