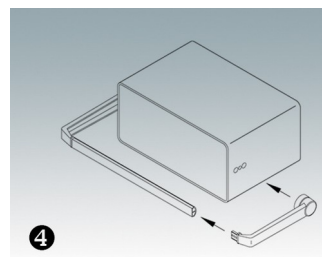
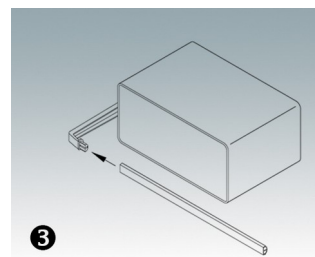
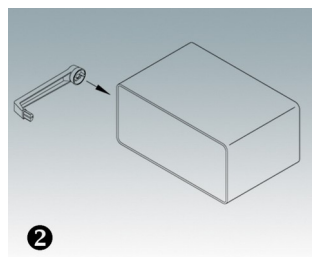
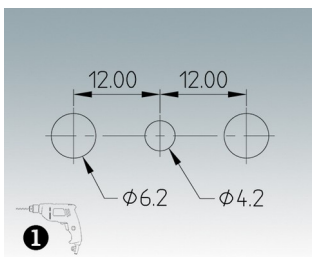
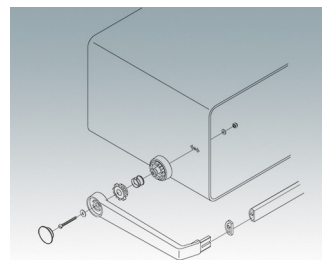
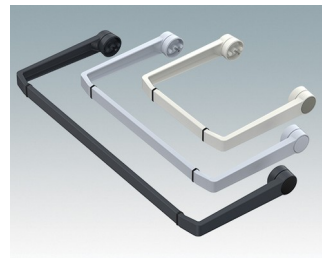
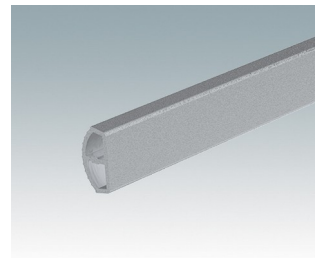
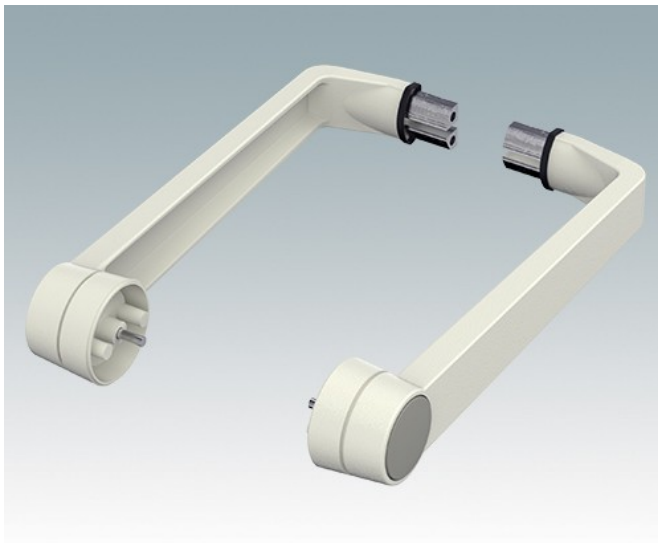
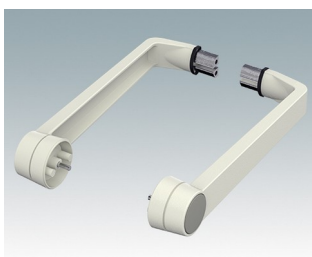


# UNIVERSAL CARRY HANDLE BARS

- Tilt and swivel carry handle bars/bail arms made of diecast zinc
- With matching aluminium profile, cut to the correct width for your enclosure, and supplied as a separate component.



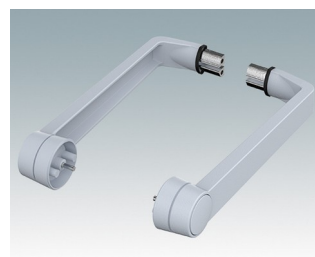
## Select Versions



**A9300014**  
Side arm kit  
Zinc  
Off-white RAL 9002



**M5093004**  
Side arm kit  
Zinc  
Anthracite RAL 7016

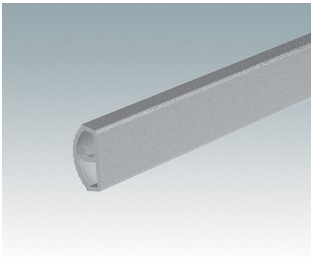


**M5093005**  
Side arm kit  
Zinc  
Light grey RAL 7035

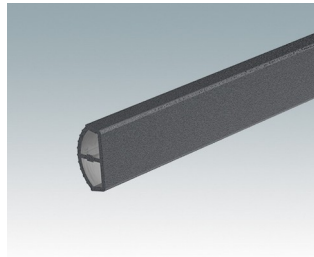


**M5093009**  
Side arm kit  
Zinc  
Black RAL 9005

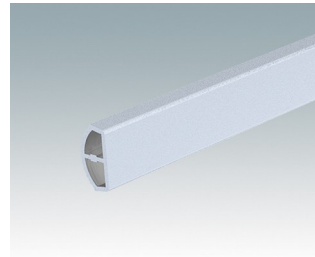
## System components to complete



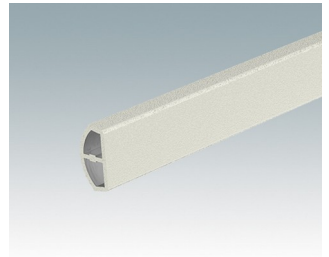
**M50930-xxx**  
Handle profile, RAL 9006  
Aluminium  
Silver metallic RAL 9006



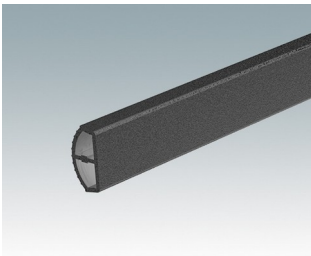
**M50934-xxx**  
Handle profile, RAL 7016  
Aluminium  
Anthracite RAL 7016



**M50935-xxx**  
Handle profile, RAL 7035  
Aluminium  
Light grey RAL 7035



**M50937-xxx**  
Handle profile, RAL 9002  
Aluminium  
Off-white RAL 9002



**M50939-xxx**  
Handle profile, RAL 9005  
Aluminium  
Black RAL 9005

Subject to technical modification without notice. © OKW Enclosures Ltd