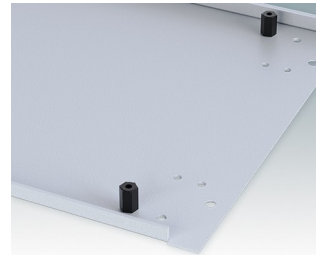
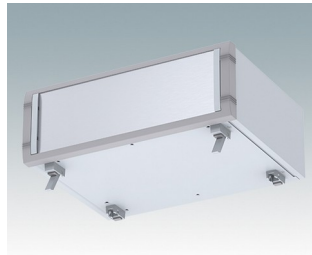
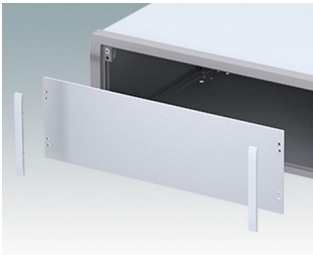
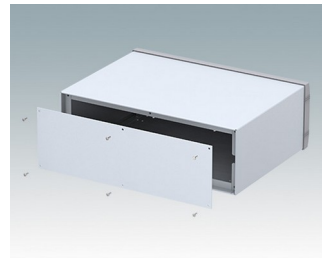
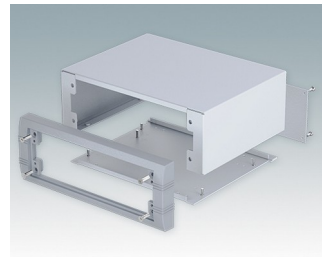


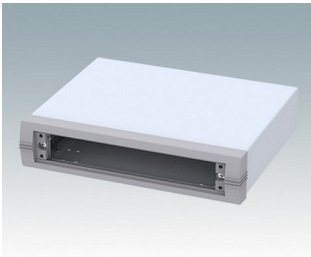
Modern desktop and portable instrument enclosures

- Stylish, robust and versatile aluminium design in six standard sizes
- With or without a tilt/swivel carry handle bar
- Die cast front bezel is assembled to the folded aluminium case body
- Removable rear panel - recessed for protection of connectors, switches etc.
- Mounting holes in base for PCBs, chassis etc.
- Anodised aluminium front panels (accessory)
- Four non-slip rubber feet included
- Supplied pre-assembled
- Optional moulded ABS tilt feet (accessory).

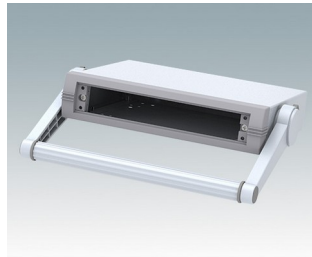
Order your own fully customised version [learn more here >>](#)



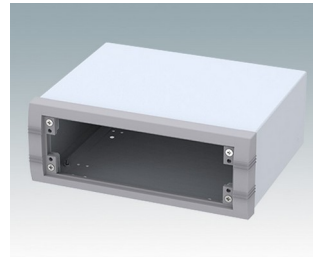
Select Versions



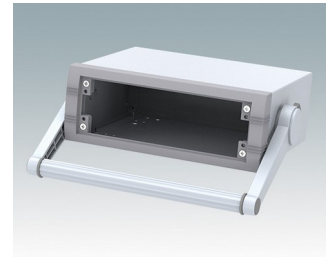
M5623005
UNIMET 1
Aluminium
Light grey/window grey RAL 7035/7040
230x190x50mm



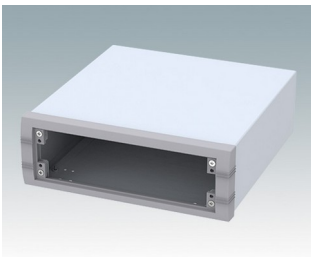
M5623025
UNIMET 1H
Aluminium
Light grey/window grey RAL 7035/7040
230x190x50mm



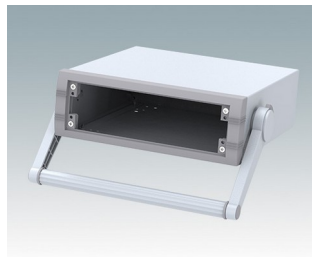
M5623105
UNIMET 2
Aluminium
Light grey/window grey RAL 7035/7040
230x190x85mm



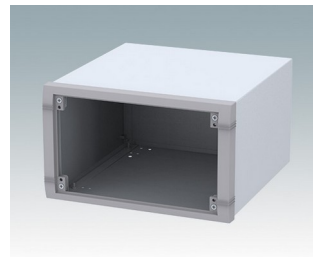
M5623125
UNIMET 2H
Aluminium
Light grey/window grey RAL 7035/7040
230x190x85mm



M5625105
UNIMET 3
Aluminium
Light grey/window grey RAL 7035/7040
250x260x85mm



M5625125
UNIMET 3H
Aluminium
Light grey/window grey RAL 7035/7040
250x260x85mm



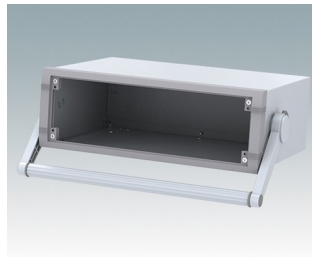
M5625305
UNIMET 5
Aluminium
Light grey/window grey RAL 7035/7040
250x260x150mm



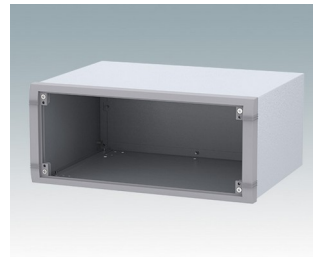
M5625325
UNIMET 5H
Aluminium
Light grey/window grey RAL 7035/7040
250x260x150mm



M5635205
UNIMET 4
Aluminium
Light grey/window grey RAL 7035/7040
350x260x120mm



M5635225
UNIMET 4H
Aluminium
Light grey/window grey RAL 7035/7040
350x260x120mm

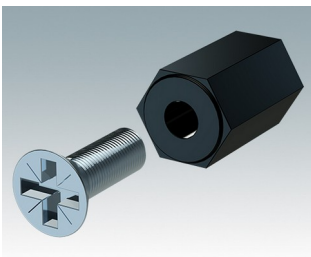


M5635305
UNIMET 6
Aluminium
Light grey/window grey RAL 7035/7040
350x260x150mm

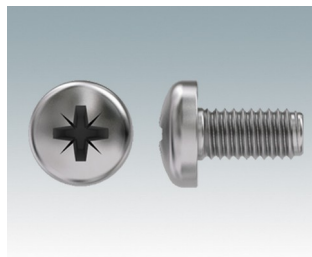


M5635325
UNIMET 6H
Aluminium
Light grey/window grey RAL 7035/7040
350x260x150mm

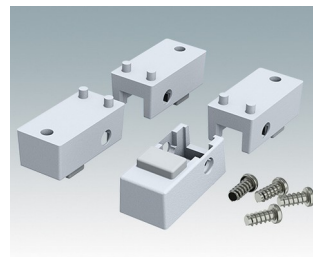
Accessory



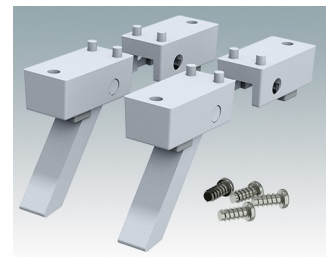
M5600001
PCB mounting kit
PA 6
Black RAL 9005



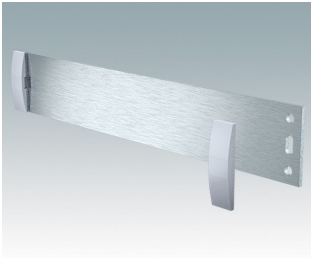
M5600010
PCB/Panel Fixing Screws, M3
Steel
Zinc coated
6mm



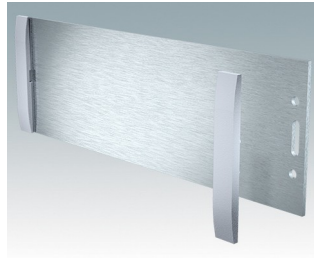
M5600015
Case Feet Kit 1
ABS (UL 94 HB)
Light grey RAL 7035
34x17x16mm



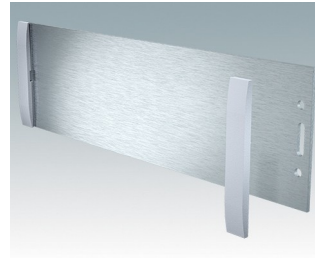
M5600045
Case Feet Kit 2
ABS (UL 94 HB)
Light grey RAL 7035
34x17x16mm



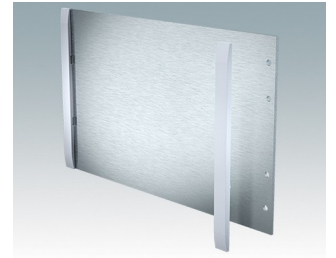
M5700607
 Front panel kit (1/1H)
 Aluminium
 Matt anodised
 199.5x2x33.6mm



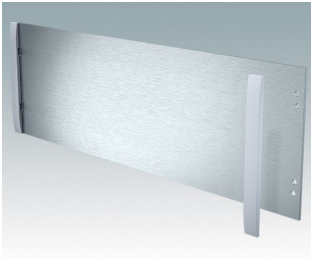
M5700608
 Front panel kit (2/2H)
 Aluminium
 Matt anodised
 199.5x2x65.1mm



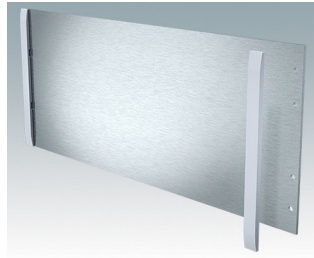
M5700613
 Front panel kit (3/3H)
 Aluminium
 Matt anodised
 219.5x2x65.1mm



M5700616
 Front panel kit (5/5H)
 Aluminium
 Matt anodised
 219.5x2x130.1mm



M5700620
 Front panel kit (4/4H)
 Aluminium
 Matt anodised
 319.5x2x100.1mm



M5700621
 Front panel kit (6/6H)
 Aluminium
 Matt anodised
 319.5x2x130.1mm

Subject to technical modification without notice. © OKW Enclosures Ltd