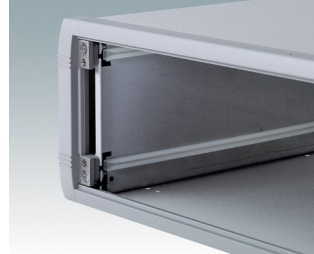
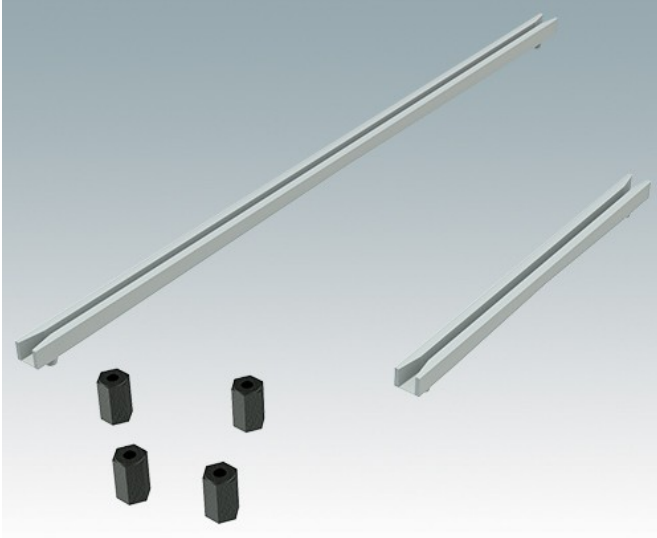
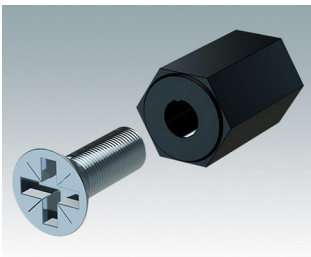


Universal accessories for mounting PCBs in any enclosures

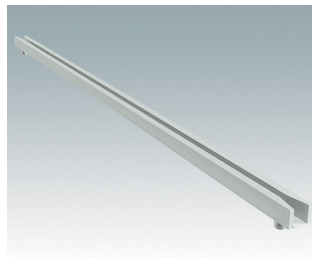
- M3 plastic PCB mounting pillars, 10 mm high
- Snap-in PCB guides for 1.6 mm thick PCBs.



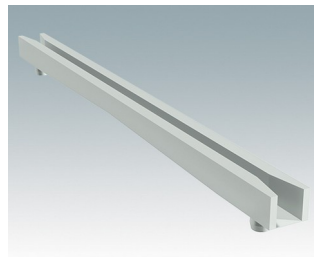
Select Versions



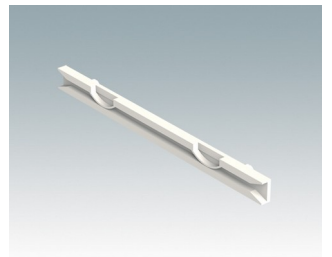
M5600001
PCB mounting kit
PA 6
Black RAL 9005



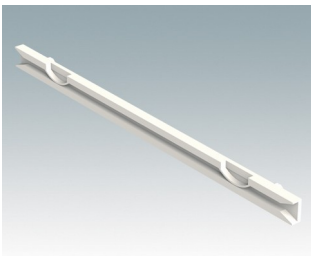
M5700202
PCB guide, 216mm
PA 6/6 (UL 94 V-2)
White



M5700203
PCB guide, 102mm
PA 6/6 (UL 94 V-2)
White

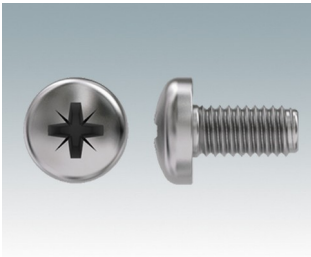


M6490010
PCB Guide, 102 mm
PA 6/6 (UL 94 V-0)
Natural finish
101.6x7.5x3.5mm



M6490020
PCB Guide, 140 mm
PA 6/6 (UL 94 V-0)
Natural finish
139.7x7.5x3.5mm

Accessory



M5600010
PCB/Panel Fixing Screws, M3
Steel
Zinc coated
6mm

Subject to technical modification without notice. © OKW Enclosures Ltd