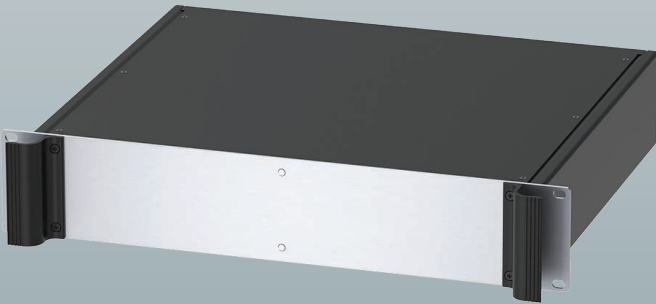




YOUR PARTNER FOR  
METAL ELECTRONIC  
ENCLOSURES

**MET** case™  
Electronic Enclosures



## STANDARD ENCLOSURES

## CUSTOMISED ENCLOSURES

Elegant METCASE aluminium enclosures safeguard your electronics and showcase the high quality of your technology.

Specify our advanced standard enclosures and ask us to customise them to your exact specifications.

View our wide range of enclosures:

- 19" rack cases (1U to 6U and custom heights)
- desktop, portable, sloping-front instrument enclosures
- wall-mount and VESA-mount housings.

All customisation work is carried out in-house. This ensures high quality and complete accountability from start to finish. It saves you time and money.

Services include bespoke sizes, custom front panels, CNC machining, fixings and inserts, painting/ finishing and digital printing.

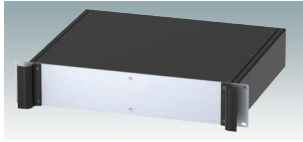
## Contact us

 +31 76 578 20 00  
[sales-nl@telereurope.com](mailto:sales-nl@telereurope.com)

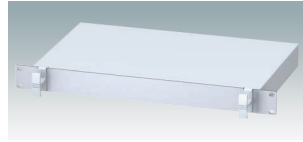
 +32 3 326 40 00  
[sales-be@telereurope.com](mailto:sales-be@telereurope.com)



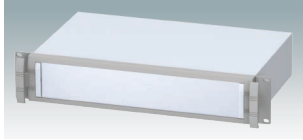
## 19" RACK MOUNT ENCLOSURES



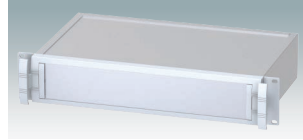
**COMBIMET 19"**  
1U | 2U | 3U | 4U | 5U | 6U



**VERSAMET 19"**  
1U



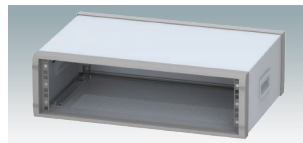
**UNIMET 19"**  
2U | 3U



**METTEC 19"**  
2U | 3U

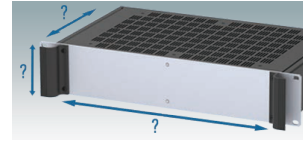


**TECHNOMET 19"**  
10.5" | 19" | 3U | 4U | 5U | 6U

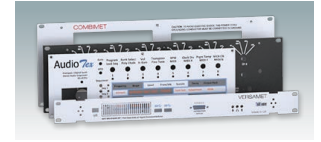


**INSTRUMET 19"**  
10.5" | 19" | 3U

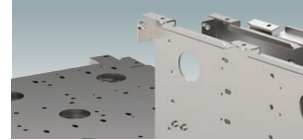
## ALL THE CUSTOMISING SERVICES YOU NEED



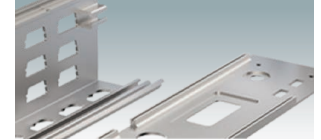
ENCLOSURES MADE TO YOUR  
SPECIAL SIZES



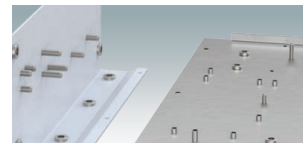
FULLY CUSTOMISED FRONT  
PANELS



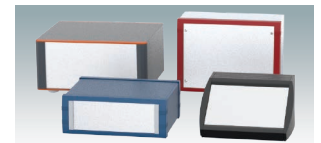
CNC PUNCHING AND FORMING  
OF FABRICATED PARTS



CNC MILLING, DRILLING AND  
TAPPING

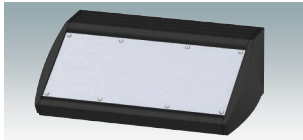


SPECIAL FIXINGS AND INSERTS  
FOR YOUR COMPONENTS



CUSTOM COLOURS AND  
FINISHES

## INSTRUMENT ENCLOSURES | HMI ENCLOSURES



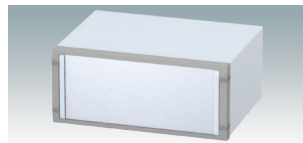
**UNIDESK**  
200x200x102mm to 400x200x102mm



**TECHNOMET**  
225x200x75mm to 350x320x150mm



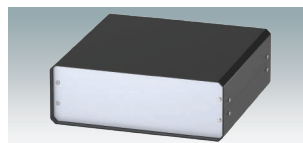
**UNIMET-PLUS**  
230x193x50mm to 350x263x150mm



**UNIMET**  
230x190x50mm to 350x260x150mm



**MINIMET**  
134x130x38mm to 174x240x70mm



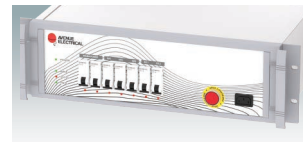
**UNICASE**  
130x180x50mm to 474x300x134mm



**TECHNOMET-CONTROL**  
230x180x95mm to 420x300x95mm



**DATAMET**  
250x180x116mm to 400x300x116mm



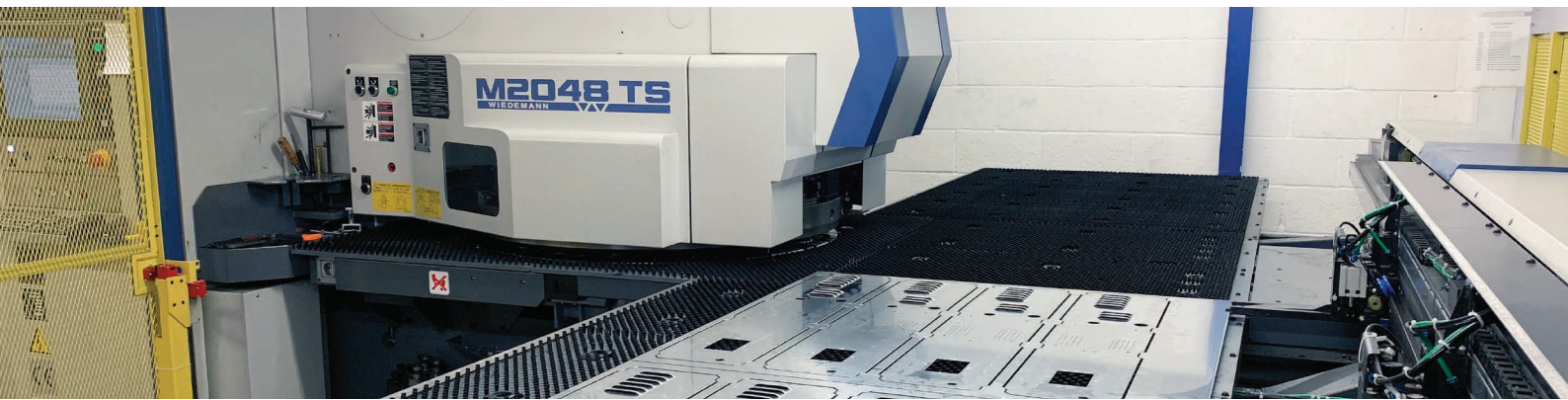
DIGITAL PRINTING OF LEGENDS,  
LOGOS AND IMAGES



## MODIFICATIONS & FINISHING

Our manufacturing site is equipped with all the equipment required to produce fully finished enclosures and front panels, ready for mounting your electronic components. We can also produce complex sheet metal parts to your drawings.

Our in-house facilities include state-of-the-art CNC punching machines, CNC break presses, CNC milling, drilling, tapping and sawing machines, inserting centres, a TIG welding station, finishing machines, a full powder paint line and the latest technology A2 digital printers.



# METcase™

Standard and customised 19" rack cases, 19" desktop mini-racks, desktop/portable instrument enclosures, wall-mount enclosures, VESA-mount HMI enclosures for walls, poles and support arms.

## BENELUX



**BELGIUM | LUXEMBOURG**  
TelereX nv  
Uilenbaan 90,  
2160 WOMMELGEM, België  
Phone: +32 3 326 40 00  
Email: sales-be@telereX-europe.com



**NETHERLANDS**  
TelereX Nederland B.V.  
Minervum 7139  
4817 ZN BREDA, Nederland  
Phone: +31 76 578 20 00  
Email: sales-nl@telereX-europe.com

[www.metcase.co.uk](http://www.metcase.co.uk)