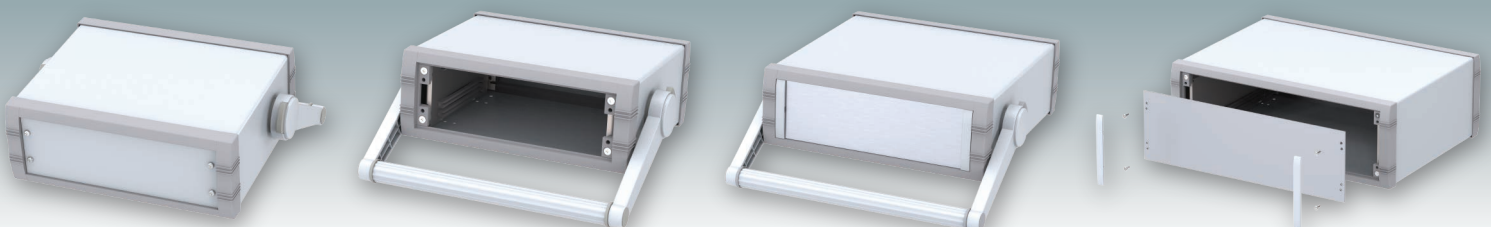
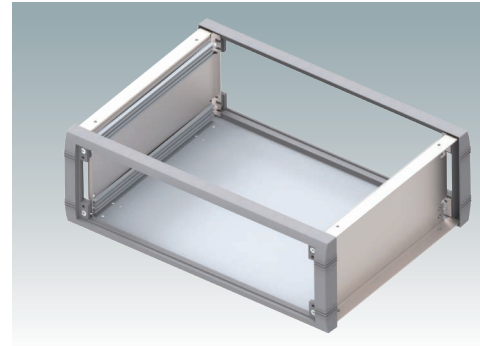
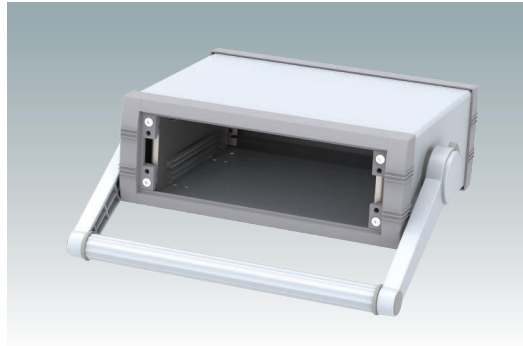
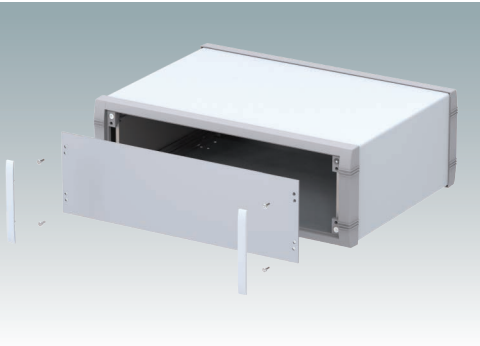
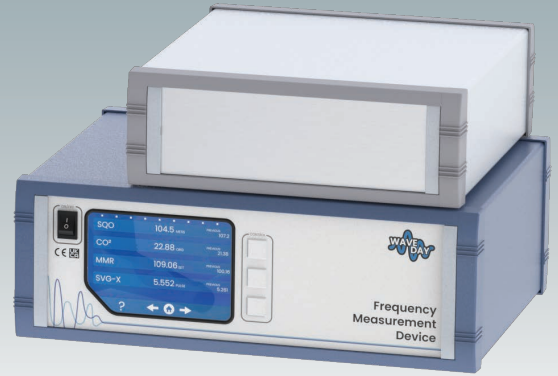


UNIMET-PLUS

Desktop/Portable
Instrument Enclosures



UNIMET-PLUS

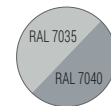


Desktop/Portable Instrument Enclosures

Stylish and versatile instrument enclosures in aluminium. Robust and versatile design in six sizes. With or without a tilt/swivel carry handle. Internal chassis with horizontal guide positions for slide-in PCBs. Four snap-in polyamide PCB guides included. Stylish diecast front and rear bezels assembled to the fabricated aluminium case body. Removable rear panel. Four non-slip rubber feet included. Order your own fully customised version.

Standard colours

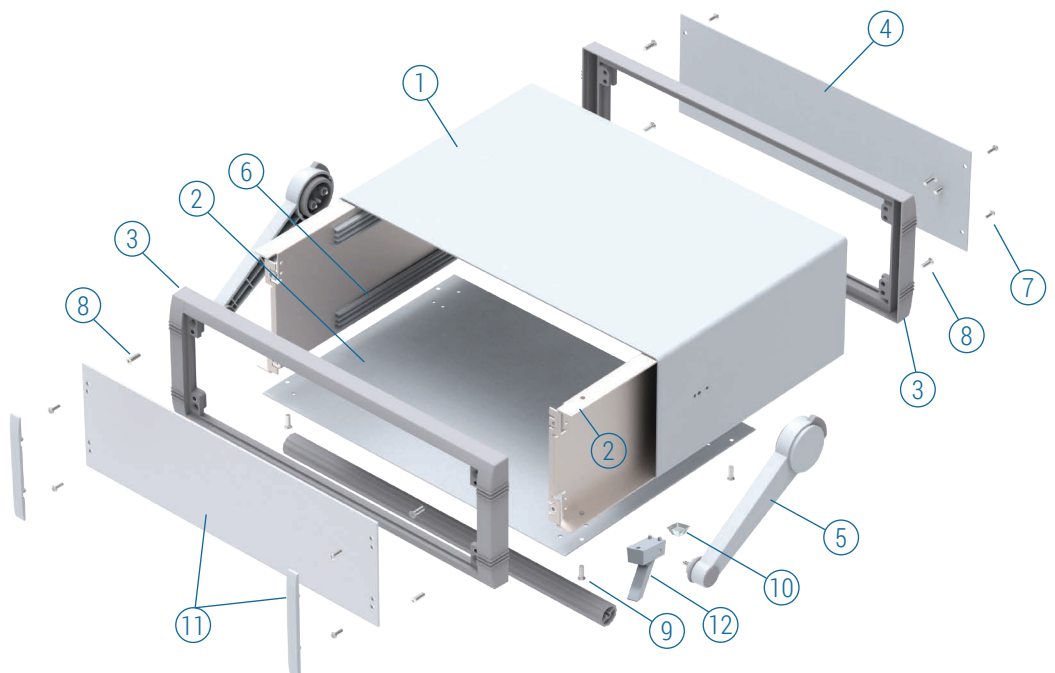
Light grey RAL 7035.
Window grey RAL 7040.



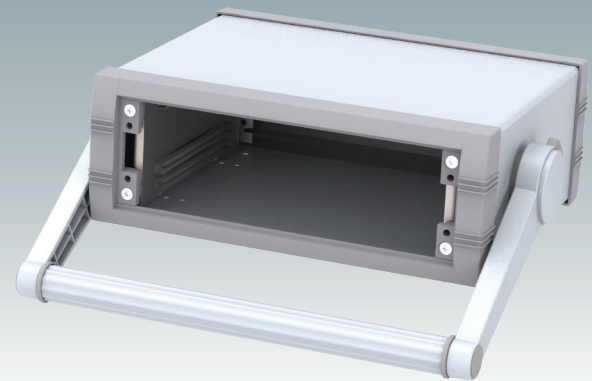
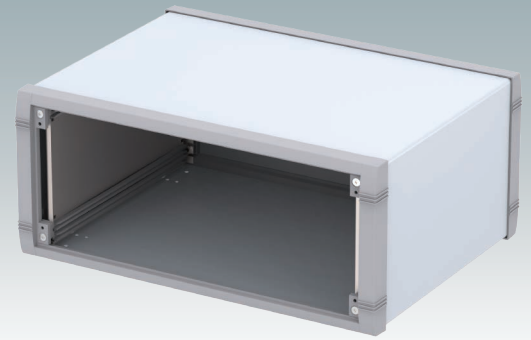
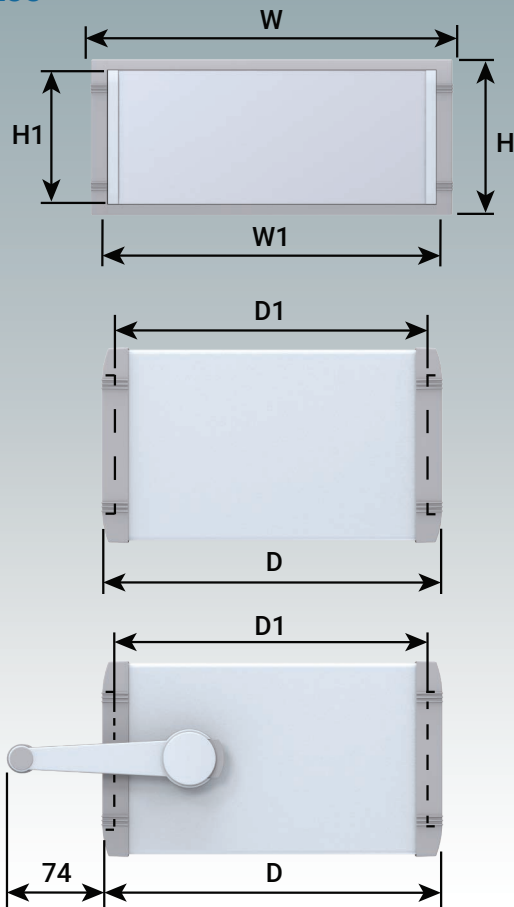
Supply

- ① Top cover
- ② Base/chassis
- ③ Front bezel (x2)
- ④ Rear panel
- ⑤ Carry handle
- ⑥ PCB guides (x4)
- ⑦ M3 x 10 mm (x8)
- ⑧ M4 x 16 mm (x4/8)
- ⑨ M3 x 6 mm (x4)
- ⑩ Rubber foot (x4)
- ⑪ *Front panel kit
- ⑫ *ABS feet

*accessories



UNIMET-PLUS



VERSION H

WITHOUT CARRY HANDLE

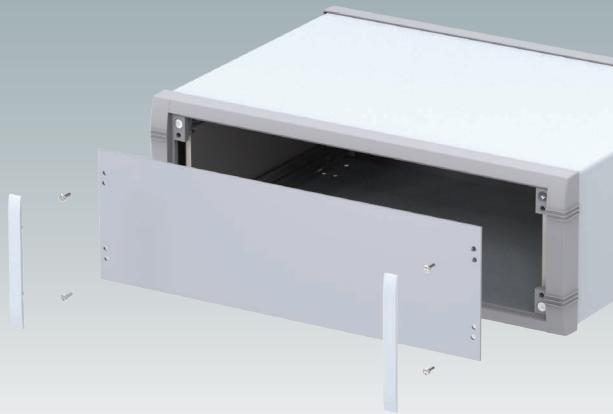
Part No.	Version	H	W	D	D1	W1 Front Panel	H1 Front Panel	PCB Width (max.)	PCB Depth (max.)	PCB Thickness
M 56 23 015	1	50	230	193	181.6	199.5	33.6	184	181.5	1.6
M 56 23 115	2	85	230	193	181.6	199.5	65.1	184	181.5	1.6
M 56 25 115	3	85	250	263	251.6	219.5	65.1	204	251.5	1.6
M 56 35 215	4	120	350	263	251.6	319.5	100.1	304	251.5	1.6
M 56 25 315	5	150	250	263	251.6	219.5	130.1	204	251.5	1.6
M 56 35 315	6	150	350	263	251.6	319.5	130.1	304	251.5	1.6

WITH CARRY HANDLE

Part No.	Version	H	W	D	D1	W1 Front Panel	H1 Front Panel	PCB Width (max.)	PCB Depth (max.)	PCB Thickness
M 56 23 035	1H	50	230	193	181.6	199.5	33.6	184	181.5	1.6
M 56 23 135	2H	85	230	193	181.6	199.5	65.1	184	181.5	1.6
M 56 25 135	3H	85	250	263	251.6	219.5	65.1	204	251.5	1.6
M 56 35 235	4H	120	350	263	251.6	319.5	100.1	304	251.5	1.6
M 56 25 335	5H	150	250	263	251.6	219.5	130.1	204	251.5	1.6
M 56 35 335	6H	150	350	263	251.6	319.5	130.1	304	251.5	1.6

For full 2D drawings and 3D models please see our website.

For front panels and accessories see page 4.



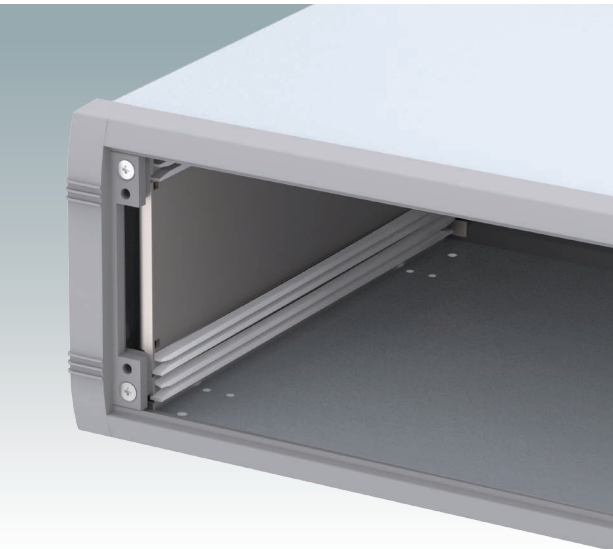
Front Panel Kits

Supply:

Panel (2 mm matt anodised aluminium)
2 Trims (ABS, RAL 7035)

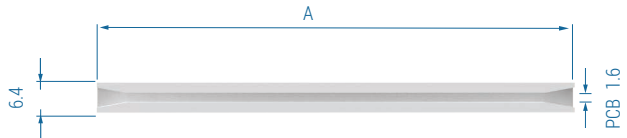


Part No.	Version	A	B
M 57 00 607	1/1H	33.6	199.5
M 57 00 608	2/2H	65.1	199.5
M 57 00 613	3/3H	65.1	219.5
M 57 00 620	4/4H	100.1	319.5
M 57 00 616	5/5H	130.1	219.5
M 57 00 621	6/6H	130.1	319.5

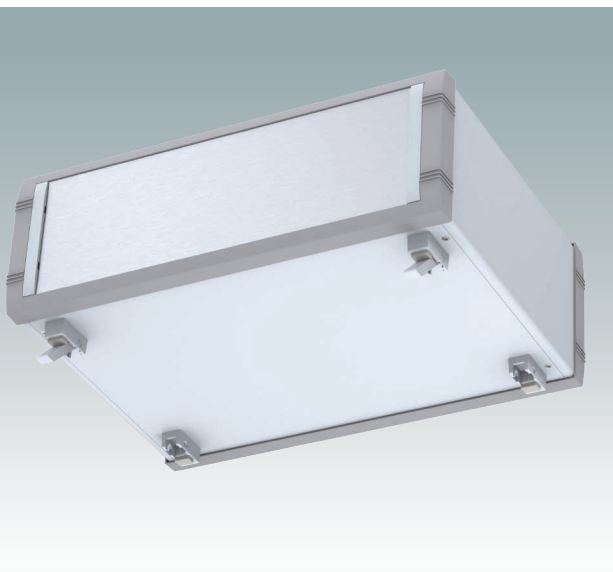


PCB Guides

Four PCB guides are supplied with each case as standard.
You can order additional guides here.



Part No.	A	Version
M 57 00 203	102	1/1H/2/2H
M 57 00 202	216	3/3H/4/4H/5/5H/6/6H

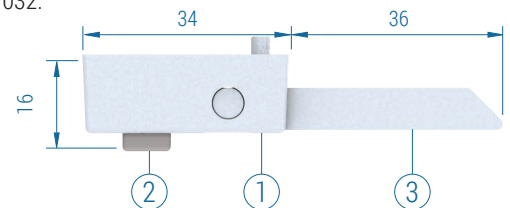


Feet Kits

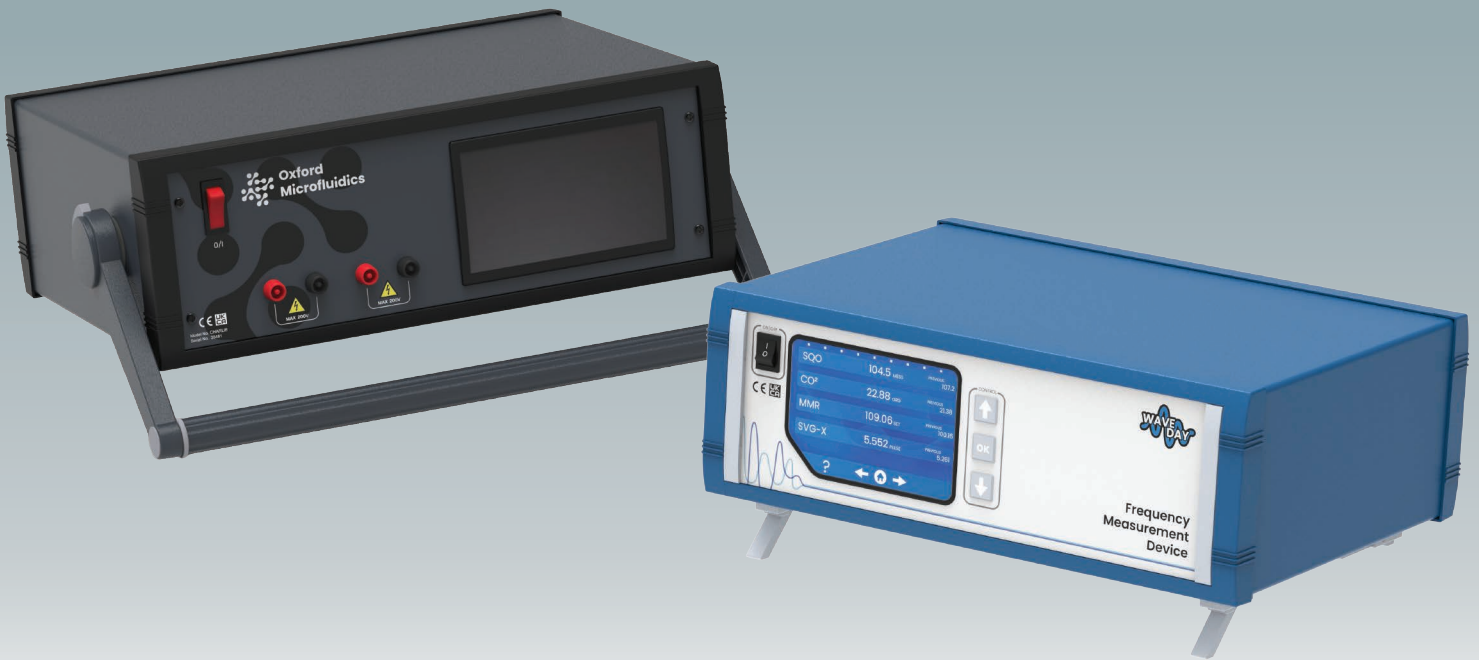
Optional moulded feet which replace the four standard rubber feet supplied with the enclosures. They are assembled to pre-punched holes in the UNIMET-PLUS base panels with self-tapping screws (included).

Material:

Feet and legs: ABS, light grey RAL 7035.
Non-slip pads: TPE, pebble grey RAL 7032.



Part No.	Version	Supply
M 56 00 015	Without tilt legs	①+② x 4
M 56 00 045	With tilt legs	①+② x 4 + ③ x 2



Order your own customised version

We can supply the UNIMET-PLUS enclosures fully customised to your individual technical specifications.

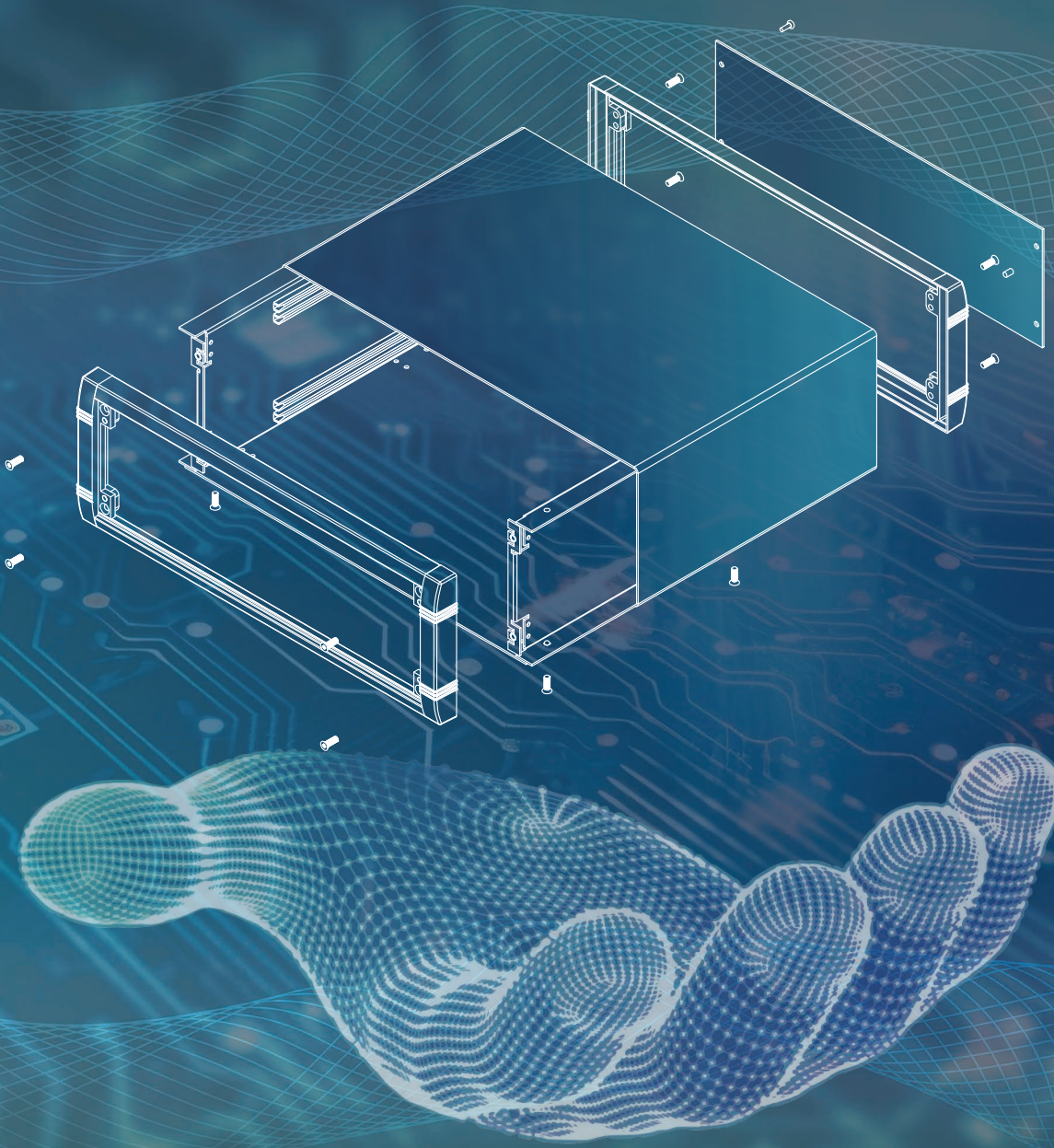
All external dimensions – height, width and depth – can be modified to ensure your PCB assemblies and equipment will fit exactly.

The enclosures and front panels can be machined with holes and cutouts for fitting displays, keypads, HMI touch panels, control buttons and connections.

Other services include adding inserts and screw bosses; custom colours and finishes; digital and silk-screen printing, and engraving.

Having a flexible manufacturing system allows us to offer competitive prices even for small quantities. Do not hesitate to ask us for a quotation.

Our sales team will be very happy to discuss your requirements and help you specify your UNIMET-PLUS enclosures exactly as you need them.



METcase™

MANUFACTURER

Metcase Enclosures
A division of:
OKW Enclosures Ltd.
15 Brunel Way
Segensworth East
Fareham, Hampshire
PO15 5TX
United Kingdom

Telephone: +44 (0) 1489 583858
Email: sales@metcase.co.uk
Website: www.metcase.co.uk

© OKW Enclosures Ltd. All rights reserved
Catalogue Edition 1.2 – March 2025.
This catalogue will be valid until 31/12/2027.
Subject to technical modifications without notice.
Typographical and other errors do not justify any
claim for damages.
Digital Version: 03/2025e

Presented by:

Find your local sales partner here:



UNITED KINGDOM | IRELAND
OKW ENCLOSURES LTD
15 Brunel Way,
Segensworth East,
Fareham, PO15 5TX
United Kingdom
Phone: +44 (0) 1489 583858
Email: sales@metcase.co.uk
Website: www.metcase.co.uk



AUSTRALIA | NEW ZEALAND
ROLEC OKW Australia New Zealand PTY LTD
Unit 6/29 Coombes Drive, Penrith NSW 2750
Phone: +61 2 4722 3388
Email: metcase@rolec-okw.com.au
Website: www.metcase.com.au



BELGIUM | LUXEMBOURG
TelereX nv
Uilenbaan 90, 2160 WOMMELGEM, België
Tel: +32 3 326 40 00
Email: sales-be@telereX-europe.com
Website: www.metcase.co.uk



BRAZIL
sob Schurter + OKW do Brasil
Componentes Eletrônicos Ltda.
Rua Barão do Triunfo,
88 - Sala 606 Brooklin,
São Paulo/SP CEP 04602-000
Phone: +55 (11) 50 90 00 30
Email: info@sob-brasil.com
Website: www.metcase.co.uk



ISRAEL
P. Weiss
20 Ha-Ta'as st.
P.O.B. 50 Kfar-Saba, 4442520.
Phone +972 9 7677500
Email: pweiss@pweiss.co.il
Website: www.metcase.co.uk



ITALY
Alhof di A. Hofmann SPA
Via Melegnano 20,
20019 Settimo Milanese MI
Phone: (02) 28 50 08 1
Email: alhof@alhof.com
Website: www.metcase.co.uk



NETHERLANDS
TelereX Nederland B.V.
Minervum 7139, 4817 ZN BREDA
Tel: +31 76 578 20 00
Email: sales-nl@telereX-europe.com
Website: www.metcase.co.uk

www.metcase.co.uk