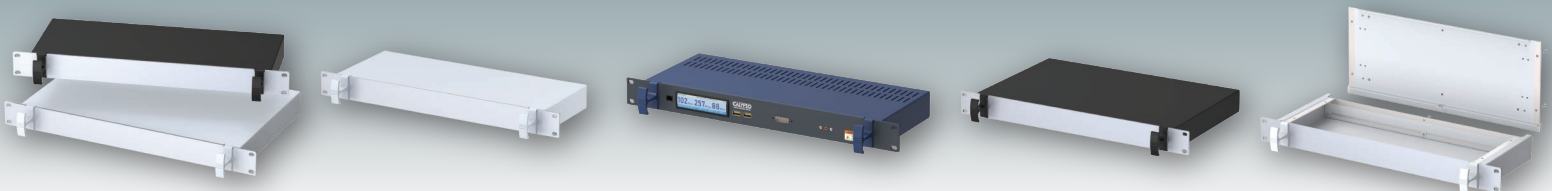
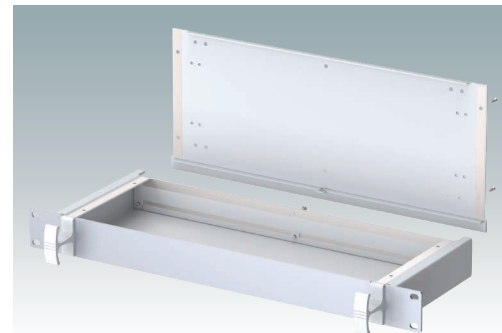
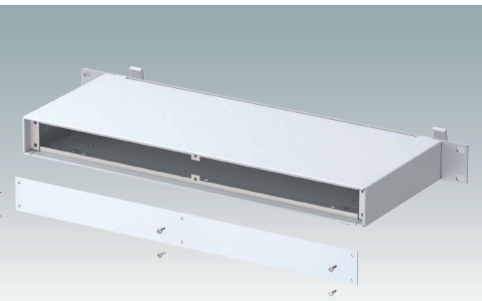
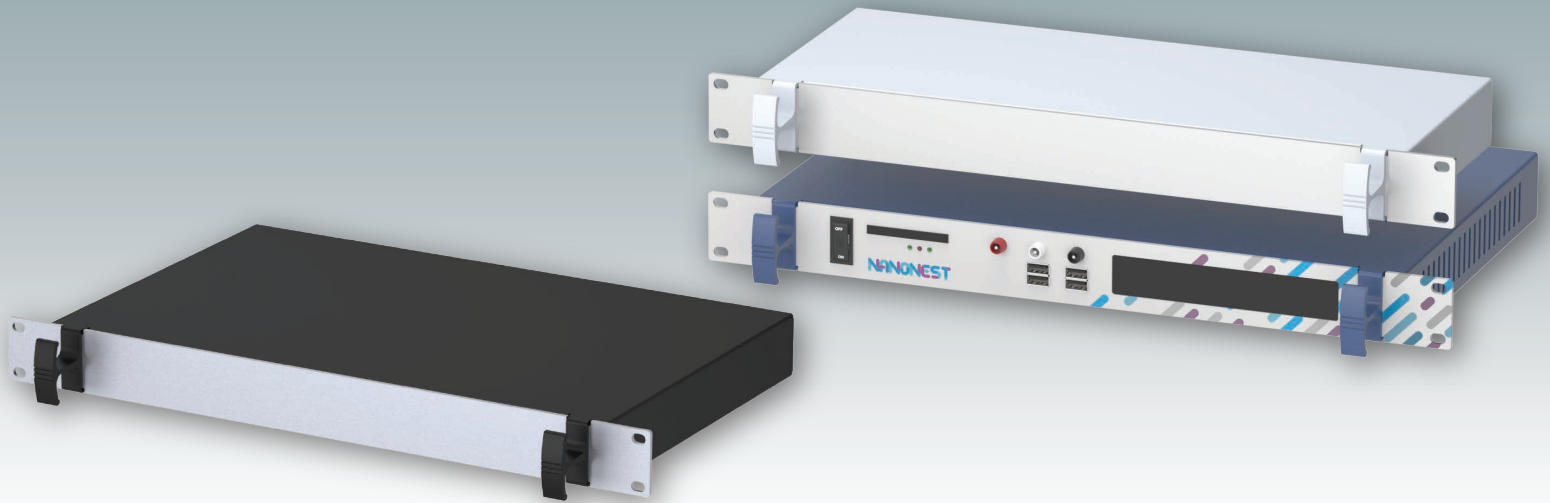


VERSAMET 19"

Rack Mount Enclosures
DIN 41494 | IEC 60297-3



VERSAMET 19"



Versatile 1U rack-mount enclosures

Modern 1U rack-mount enclosures made from aluminium, compliant with DIN 41494 and IEC 60297-3 standards. Features an attractive design with unique "comfort handles." Robust case body with removable base and rear panels. Anodised aluminium 1U x 19" front panel. Mounting holes in the base for PCBs. Optional moulded feet for desktop use. Order your fully customised version.

Standard colours

Black RAL 9005.
Light grey RAL 7035.

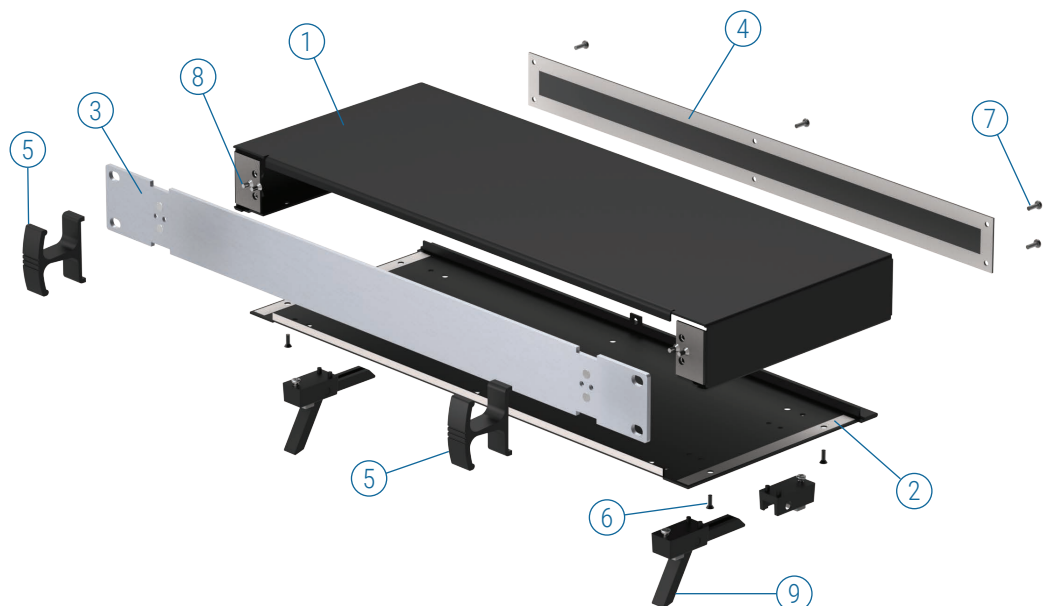
RAL 9005

RAL 7035

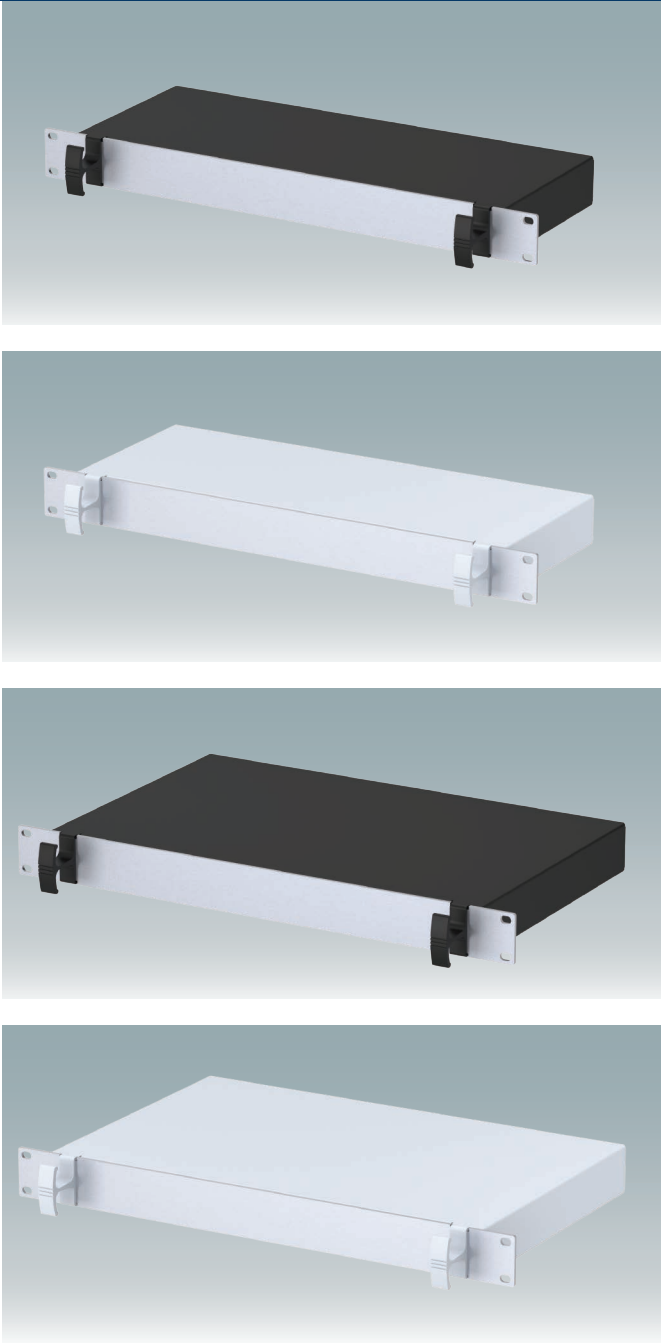
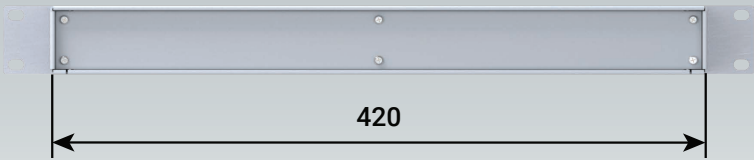
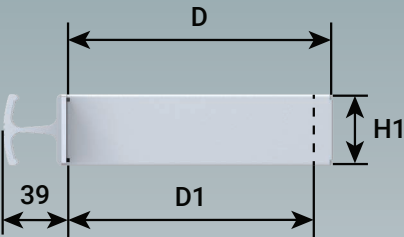
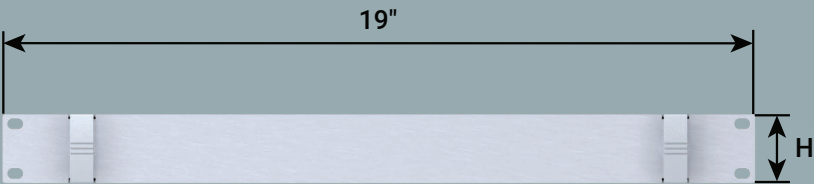
Supply

- ① Top cover
- ② Base panel
- ③ 19" front panel
- ④ Rear panel
- ⑤ Handles
- ⑥ M3 x 8 mm (x4/x6)
- ⑦ M3 x 8 mm (x6)
- ⑧ M4 nut & washer (x4)
- ⑨ *ABS feet



*accessories



VERSAMET 19"

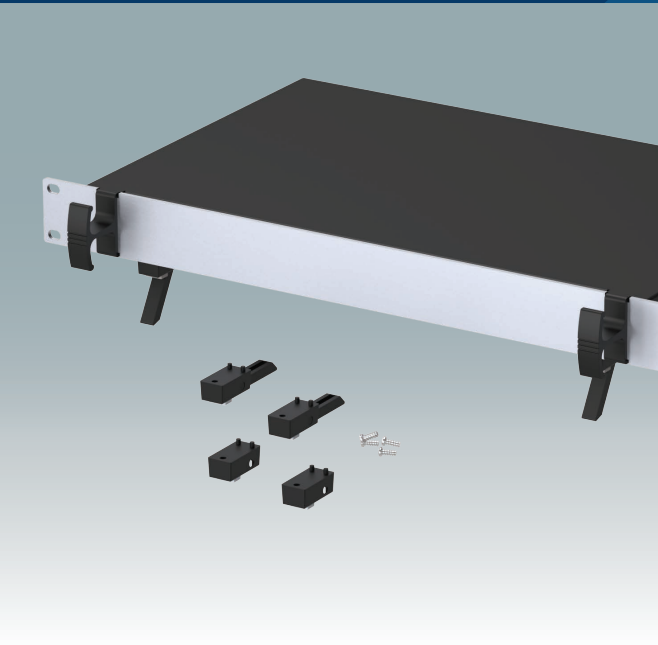


VERSAMET 19"

Part No.	Part No.	Version	H	H1	D	D1
RAL 9005 	RAL 7035 					
M 49 19 119	M 49 19 115	1U	44	38	165	153
M 49 19 129	M 49 19 125	1U	44	38	265	253

For full 2D drawings and 3D models please see our website.

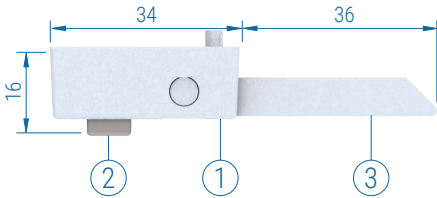
For front panels and accessories see page 4.



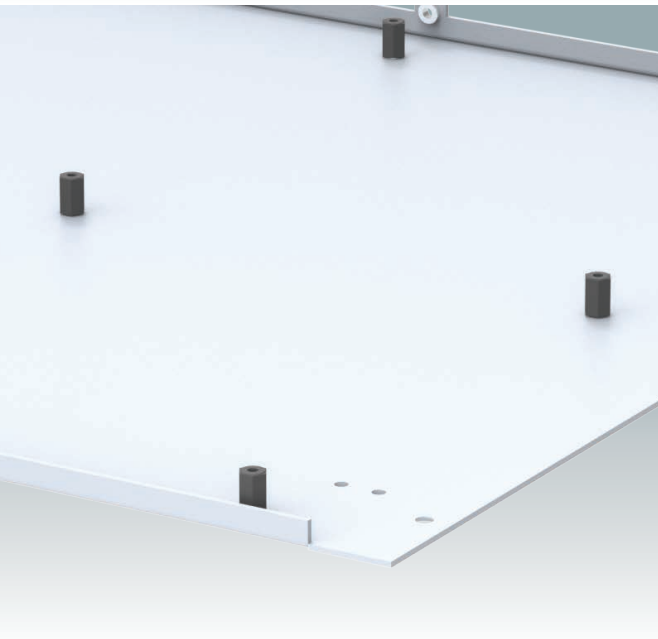
Feet Kits

These feet are attached to the pre-punched holes in the VERSAMET 19" base panel using the included self-tapping screws.

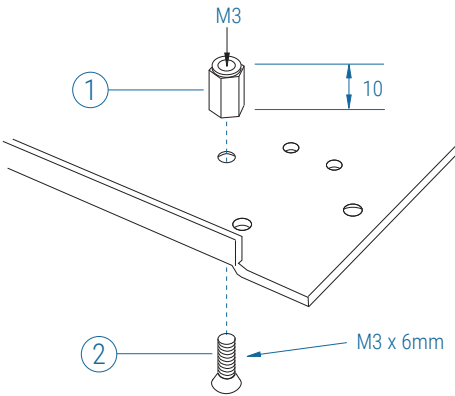
Material:
Feet and legs: ABS.
Non-slip pads: TPE.



Part No.	Version	Supply	Colours
M 56 00 015	Without tilt legs	①+② x 4	RAL 7035
M 56 00 019	Without tilt legs	①+② x 4	RAL 9005
M 56 00 045	With tilt legs	①+② x 4 +③ x 2	RAL 7035
M 56 00 049	With tilt legs	①+② x 4 +③ x 2	RAL 9005



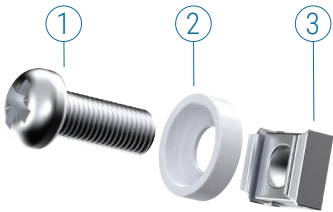
PCB Mounting Kit



Part No.	Supply
M 56 00 001	①+② x 10



19" Mounting Kit



Part No.	Supply	Colour
M 60 00 035	①+②+③ x 4	RAL 7035 ②
M 59 00 016	①+②+③ x 4	RAL 9005 ②
M 59 00 018	①+②+③ x 4	RAL 9005 ① ②



Order your own customised version

We can supply the VERSAMET 19" enclosures fully customised to your individual technical specifications.

The external depth dimension can be modified to ensure your assemblies and equipment will fit exactly.

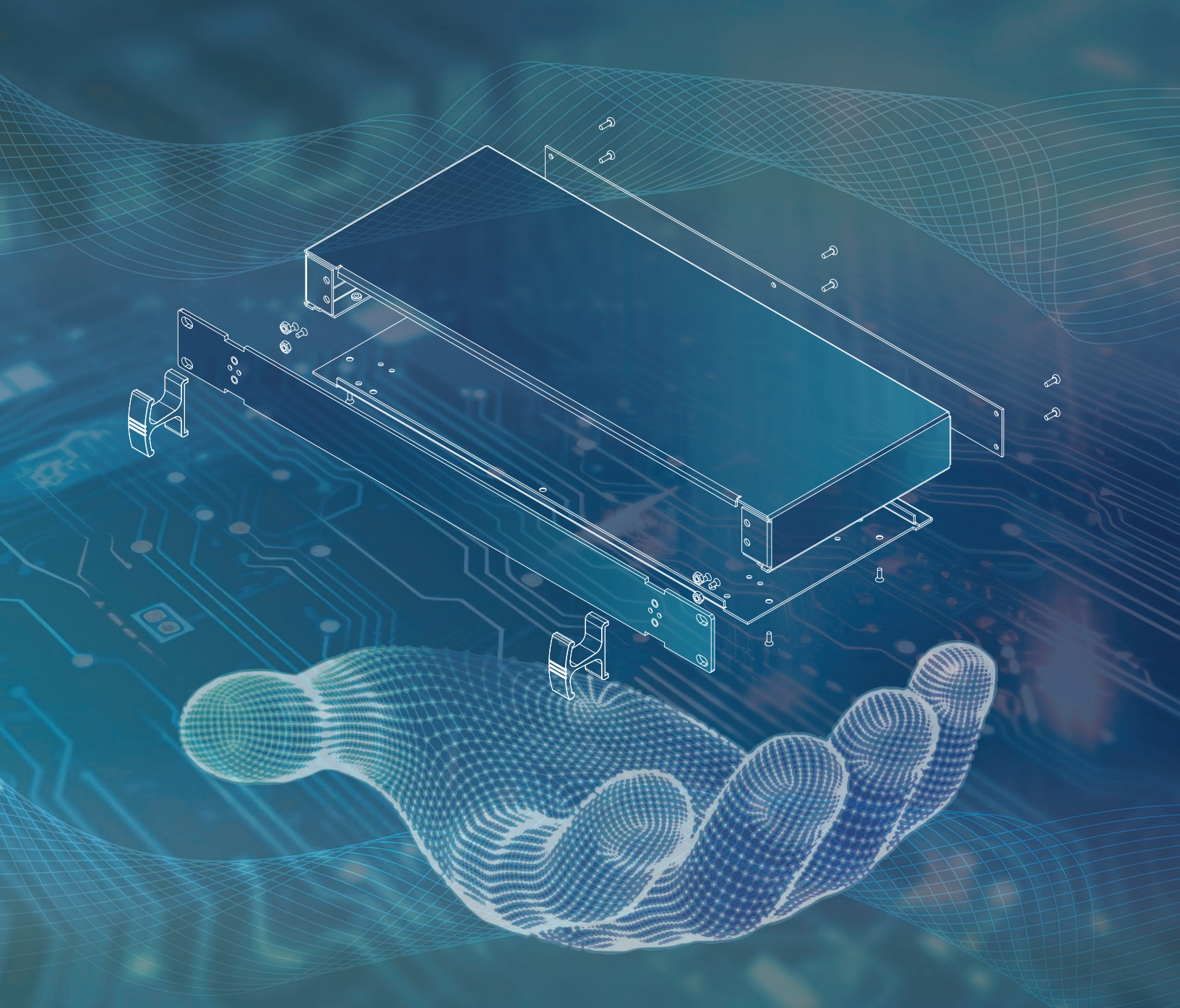
The enclosures and front panels can be machined with holes and cutouts for fitting displays, keypads, HMI touch panels, control buttons and connections.

Other services include adding inserts and screw bosses; custom colours and finishes; digital and silk-screen printing and engraving.

Having a flexible manufacturing system allows us to offer competitive prices even for small quantities. Do not hesitate to ask us for a quotation.

Our sales team will be very happy to discuss your requirements and help you specify your VERSAMET 19" enclosures exactly as you need them.





METcase™

MANUFACTURER

Metcase Enclosures
A division of:
OKW Enclosures Ltd.
15 Brunel Way
Segensworth East
Fareham, Hampshire
PO15 5TX
United Kingdom

Telephone: +44 (0) 1489 583858
Email: sales@metcase.co.uk
Website: www.metcase.co.uk

© OKW Enclosures Ltd. All rights reserved
Catalogue Edition 1.1 – December 2025.
This catalogue will be valid until 31/12/2027.
Subject to technical modifications without notice.
Typographical and other errors do not justify any
claim for damages.
Digital Version: 12/2025e

Presented by:

Find your local sales partner here:



UNITED KINGDOM | IRELAND
OKW ENCLOSURES LTD
15 Brunel Way,
Segensworth East,
Fareham, PO15 5TX
United Kingdom
Phone: +44 (0) 1489 583858
Email: sales@metcase.co.uk
Website: www.metcase.co.uk



AUSTRALIA | NEW ZEALAND
ROLEC OKW Australia New Zealand PTY LTD
Unit 6/29 Coombes Drive, Penrith NSW 2750
Phone: +61 2 4722 3388
Email: metcase@rolec-okw.com.au
Website: www.metcase.com.au



BELGIUM | LUXEMBOURG
Telerex nv
Uilenbaan 90,
2160 WOMMELGEM, België
Tel: +32 3 326 40 00
Email: sales-be@telerex-europe.com
Website: www.metcase.co.uk



BRAZIL
sob Schurter + OKW do Brasil
Componentes Eletrônicos Ltda.
Rua Barão do Triunfo,
88 - Sala 606 Brooklin,
São Paulo/SP CEP 04602-000
Phone: +55 (11) 50 90 00 30
Email: info@sob-brasil.com
Website: www.metcase.co.uk



POLAND
LC ELEKTRONIK Sp. z o.o. Sp. k.
UL. PULKOWA 58,
01-969 Warszawa
Phone: +48 (22) 569 53 00
Email: lcel@lcel.com.pl
Website: www.metcase.co.uk



ISRAEL
P. Weiss
20 Ha-Ta'as st.
P.O.B. 50 Kfar Saba, 4442520.
Phone +972 9 7677500
Email: pweiss@pweiss.co.il
Website: www.metcase.co.uk



NETHERLANDS
Telerex Nederland B.V.
Minervum 7139, 4817 ZN BREDA
Tel: +31 76 578 20 00
Email: sales-nl@telerex-europe.com
Website: www.metcase.co.uk



ITALY
Alhof di A. Hofmann SPA
Via Melegnano 20,
20019 Settimo Milanese MI
Phone: +39 (02) 28 50 08 1
Email: alhof@alhof.com
Website: www.metcase.co.uk

www.metcase.co.uk